

FREEHOLD



House - Terraced

**MARWELL WALK, MOWMACRE HILL,
LEICESTER, LE4 2TL**

£150,000

FEATURES

- Mid Terraced House
- Dining Room
- Three Bedrooms
- Rear Garden
- Lounge
- Kitchen
- Ground Floor W/C & Upstairs Bathroom
- Gas Central Heating



3 Bedroom House - Terraced located in Leicester

****UPGRADING WORKS REQUIRED****

Three bedroom mid terraced, conveniently located closely to local schools and amenities. The accommodation comprises of a lounge, dining room, kitchen, downstairs w/c, three bedrooms and a bathroom. The property benefits from a garden to the rear and gas central heating.

Viewing is by appointment only.

Call us on

0116 266 9977

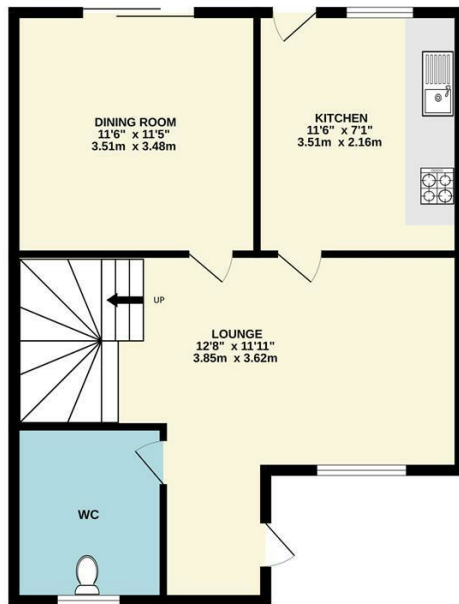
sales@seths.co.uk

www.seths.co.uk

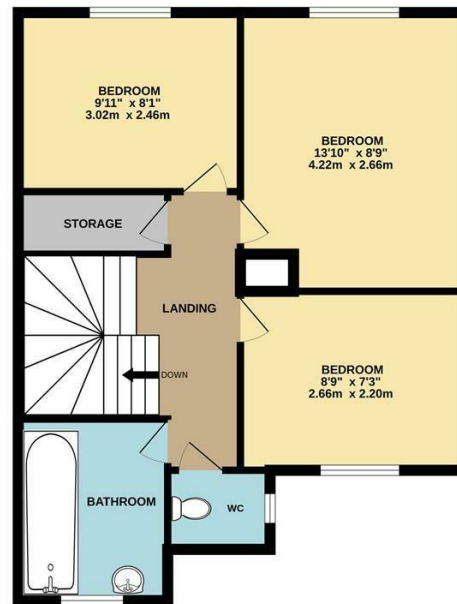
Council Tax Band

A

GROUND FLOOR



1ST FLOOR



Energy Efficiency Rating		
	Current	Potential
Very energy efficient - lower running costs		
(92 plus) A		
(81-91) B		
(69-80) C		
(55-68) D		
(39-54) E		
(21-38) F		
(1-20) G		
Not energy efficient - higher running costs		
England & Wales	EU Directive 2002/91/EC	

Agents Note: Whilst every care has been taken to prepare these particulars, they are for guidance purposes only. All measurements are approximate and are for general guidance purposes only and whilst every care has been taken to ensure their accuracy, they should not be relied upon and potential buyers are advised to recheck the measurements.

Whilst every attempt has been made to ensure the accuracy of the floorplan contained here, measurements of doors, windows, rooms and any other items are approximate and no responsibility is taken for any error, omission or mis-statement. This plan is for illustrative purposes only and should be used as such by any prospective purchaser. The services, systems and appliances shown have not been tested and no guarantee as to their operability or efficiency can be given.
Made with Metropix ©2023

